

**RWE Renewables UK Dogger Bank  
South (West) Limited**

**RWE Renewables UK Dogger Bank  
South (East) Limited**

**Dogger Bank South Offshore  
Wind Farms**

**Applicants' Suggested Itinerary for an  
Accompanied Site Inspection (Revision 01)**

**Submission at Pre-Examination Procedural  
Deadline C**

**Document Date: January 2025**

**Document Reference: 10.47**

**Revision Number: 01**

**Classification: Unrestricted**

Company:	<b>RWE Renewables UK Dogger Bank South (West) Limited and RWE Renewables UK Dogger Bank South (East) Limited</b>	Asset:	<b>Development</b>		
Project:	<b>Dogger Bank South Offshore Wind Farms</b>	Sub Project/Package	<b>Consents</b>		
Document Title or Description:	Applicants' suggested draft itinerary for an ASI (Revision 01)				
Document Number:	005405088-01	Contractor Reference Number:			
<p><i>COPYRIGHT © RWE Renewables UK Dogger Bank South (West) Limited and RWE Renewables UK Dogger Bank South (East) Limited, 2024. All rights reserved.</i></p> <p><i>This document is supplied on and subject to the terms and conditions of the Contractual Agreement relating to this work, under which this document has been supplied, in particular:</i></p> <p><b>LIABILITY</b></p> <p><i>In preparation of this document RWE Renewables UK Dogger Bank South (West) Limited and RWE Renewables UK Dogger Bank South (East) Limited has made reasonable efforts to ensure that the content is accurate, up to date and complete for the purpose for which it was contracted. RWE Renewables UK Dogger Bank South (West) Limited and RWE Renewables UK Dogger Bank South (East) Limited makes no warranty as to the accuracy or completeness of material supplied by the client or their agent.</i></p> <p><i>Other than any liability on RWE Renewables UK Dogger Bank South (West) Limited and RWE Renewables UK Dogger Bank South (East) Limited detailed in the contracts between the parties for this work RWE Renewables UK Dogger Bank South (West) Limited and RWE Renewables UK Dogger Bank South (East) Limited shall have no liability for any loss, damage, injury, claim, expense, cost or other consequence arising as a result of use or reliance upon any information contained in or omitted from this document.</i></p> <p><i>Any persons intending to use this document should satisfy themselves as to its applicability for their intended purpose.</i></p> <p><i>The user of this document has the obligation to employ safe working practices for any activities referred to and to adopt specific practices appropriate to local conditions.</i></p>					
Rev No.	Date	Status/Reason for Issue	Author	Checked by	Approved by
01	January 2025	Submission at Pre-Examination Procedural Deadline C	RWE	RWE	RWE

### Revision Change Log

Rev No.	Page	Section	Description
01	N/A	N/A	Submitted at Pre-Examination Procedural Deadline C

## Contents

1	Introduction .....	4
1.1	Accompanied Site Visit Itinerary .....	4
2	Appendices .....	6
2.1	Location Plan .....	6
2.2	Site Plan.....	7

# 1 Introduction

## 1.1 Accompanied Site Visit Itinerary

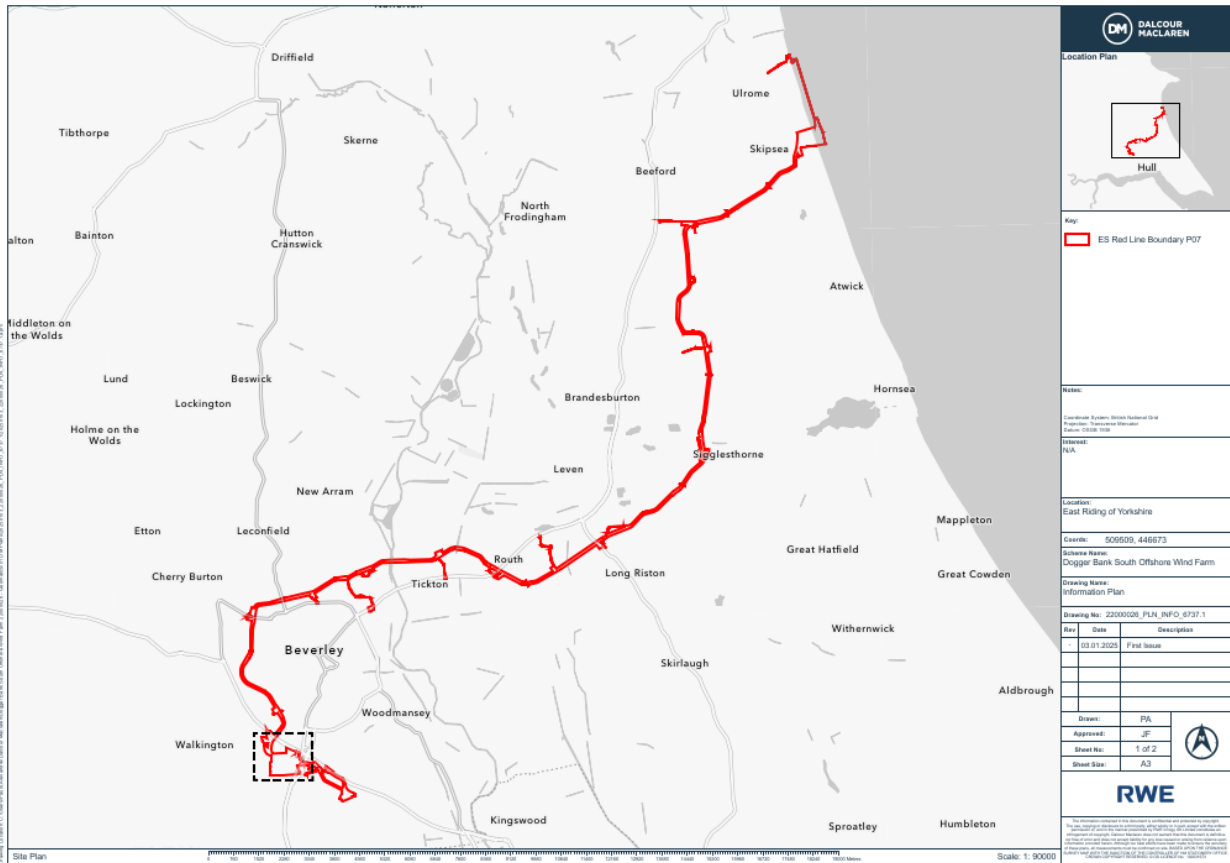
1. As requested by the Examination Authority in their Rule 6 letter [PD-005], the Applicants have reviewed whether there are any locations that the ExA should visit as part of an Accompanied Site Inspection (ASI) and produced a suggested draft itinerary (see below).
2. In considering locations that the Applicants would wish the ExA to visit, the Applicants have taken note of those locations that the ExA visited on an unaccompanied basis in September 2024 . The proposed draft itinerary for an ASI is for a visit to Butt Farm to carry out walkover of the Heavy Anti-Aircraft Gun site (Scheduled Ancient Monument) 350m west of Butt Farm. The Applicants believe that this is the only location where there is no public right of access, or with no clear view from nearby locations with open public access. The Applicants understand that the ExA have previously undertaken a thorough inspection of all publicly accessible locations during their Unaccompanied Site Inspection on Tuesday 24 September 2024 to Thursday 26 September 2024.
3. This document provides a detailed proposed itinerary for an ASI to Butt Farm to carry out walkover of the Heavy Anti-Aircraft Gun site (Scheduled Ancient Monument) 350m west of Butt Farm. Accompanying plans showing the location found in Appendix 2.1 and 2.2.
4. Butt Farm is a working agricultural and livestock farm and the gun battery is not typically accessible to the public so suitable footwear should be worn for access via farm tracks and grass.

## Table 1-1

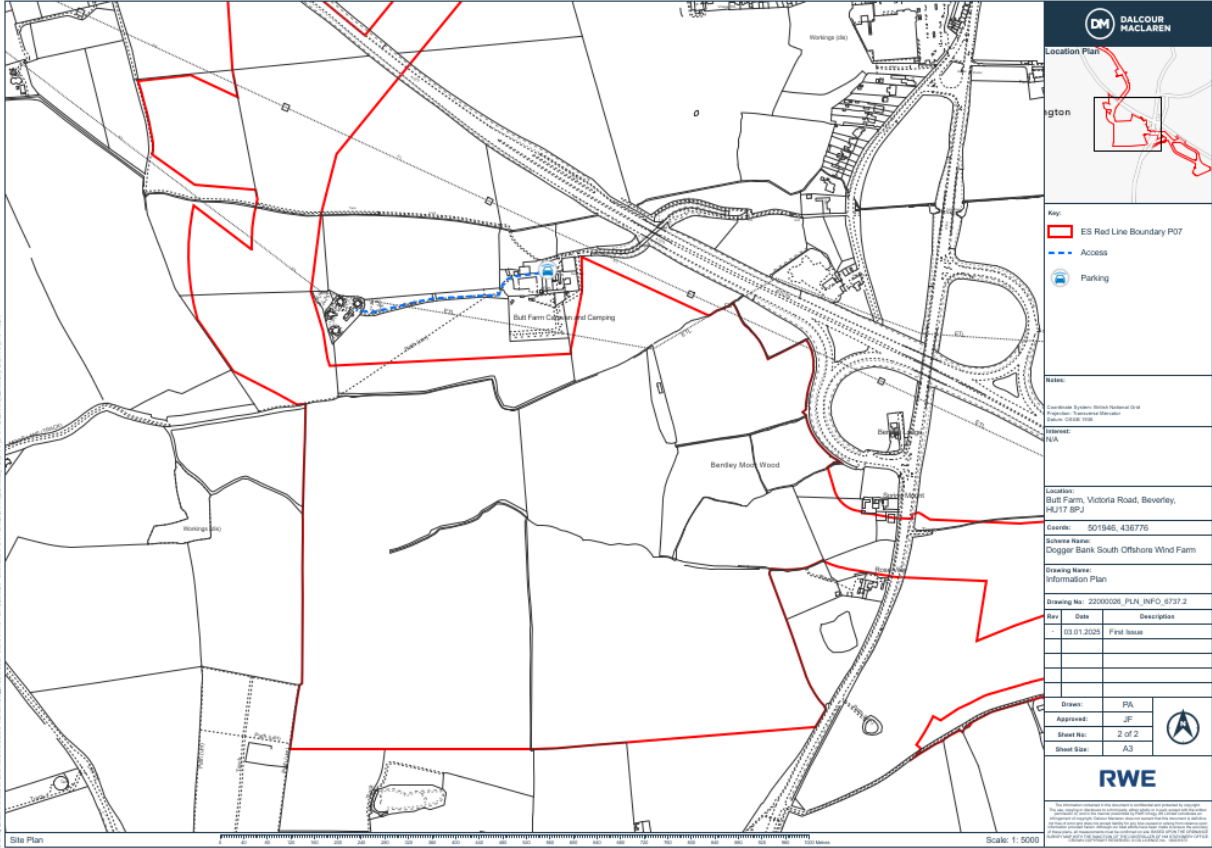
Activity	Location	Time	Duration
Meet at Beverley Train Station	Beverley Train Station, Beverley, HU17 0AS	10.30am	5 min
Travel to Butt Farm	Butt Farm, Beverley, HU17 8PJ	10.35am	15min
Walk to Gun Battery Site	Butt Farm, Beverley, HU17 8PJ	10.50am	10min
Site walkover of Gun Battery	Butt Farm, Beverley, HU17 8PJ	11am	60min
Walk back to farm/vehicles	Butt Farm, Beverley, HU17 8PJ	12pm	10min
Travel back to Beverley Train Station	Butt Farm, Beverley, HU17 8PJ	12.10pm	15min
Drop off/depart from site	Beverley Train Station, Beverley, HU17 0AS	12.25pm	5min

# 2 Appendices

## 2.1 Location Plan



# 2.2 Site Plan



RWE Renewables UK Dogger Bank  
South (West) Limited

RWE Renewables UK Dogger Bank  
South (East) Limited

Windmill Business Park  
Whitehill Way  
Swindon  
Wiltshire SN1 6PR

**RWE**

MASDAR 